



ORIENTATION

PERSPECTIVE VIEW
SCALE: 1:50



SITE DEVELOPMENT PLAN
SCALE: 1:250

DEPARTMENT OF PUBLIC
WORKS AND HIGHWAYS
OFFICE OF THE BUILDING OFFICIAL

DISTRICT/CITY/MUNICIPALITY

BUILDING OFFICIAL

LAND USE AND ZONING

LINE AND GRADE

ARCHITECTURAL

STRUCTURAL

SANITARY

ELECTRICAL

MECHANICAL

FIRE AND SAFETY

SHEET NO. 1/8

PROJECT:

PROPOSED MOTOR POOL
AND PARKING AREA

LOCATION: NANGKA BALOI, LAMMO DEL NORTE

SHEET CONTENTS:

PERSPECTIVE VIEW/
SITE DEVELOPMENT PLAN

REVIEWED BY:

Queen, Jilly L. Torawis
Resident Engineer

CHECKED BY:

Jas. C. Acuña
Acting Head Engineer

APPROVED BY:

Franklin L. Salas
Campus Director

PREPARED BY:

Engr. Roderic C. Cabuyao
Civil Engineer

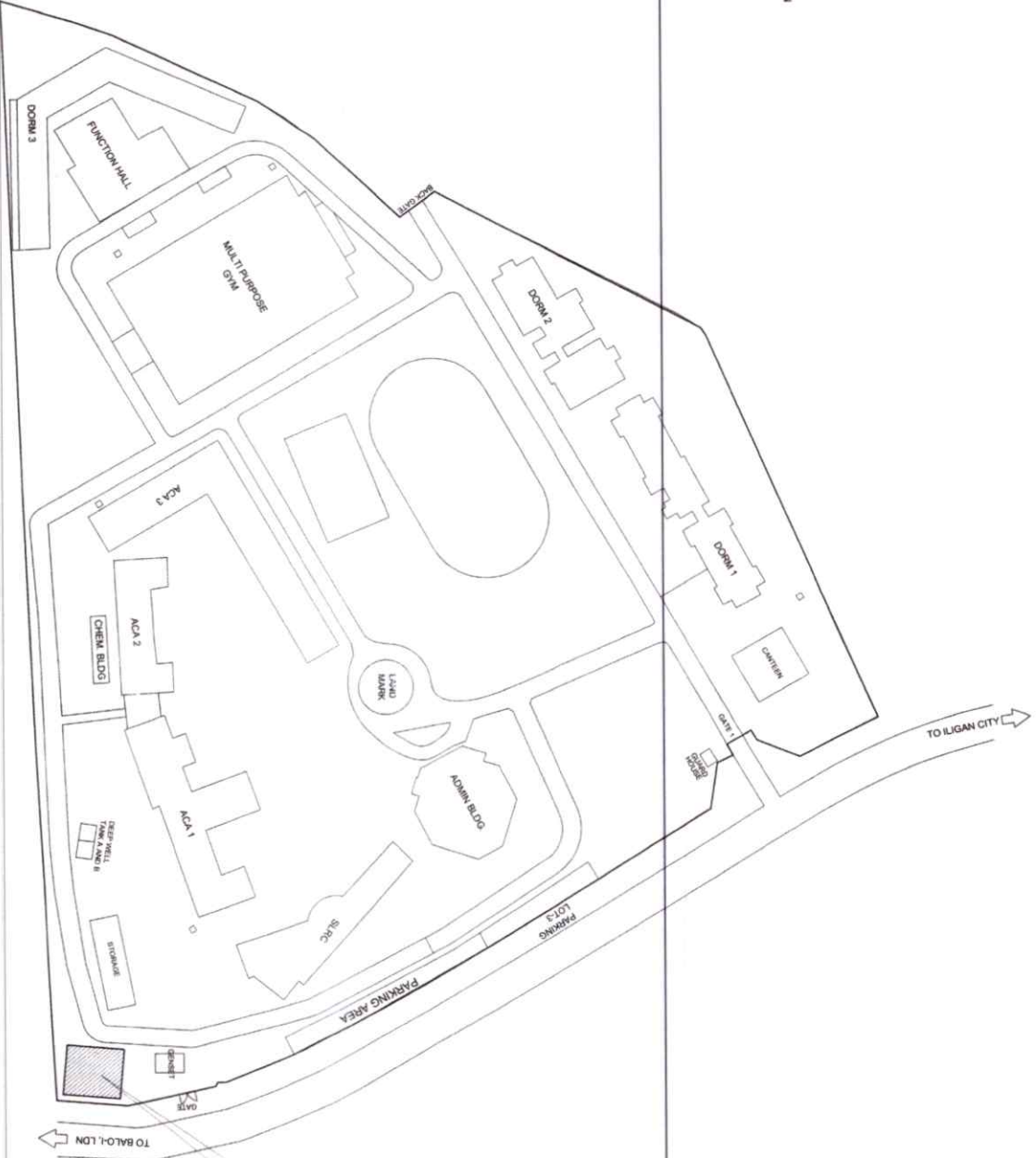
PHILIPPINE SCIENCE HIGH SCHOOL
CLAYTON, CAVENAGUO, CAVENAGUO

ALIASH
CONSULTING
ENGINEERS

REG. NO. 017375
PTR. NO. 427286
DATE: 01-14-2020
TIN. NO. 044 105328



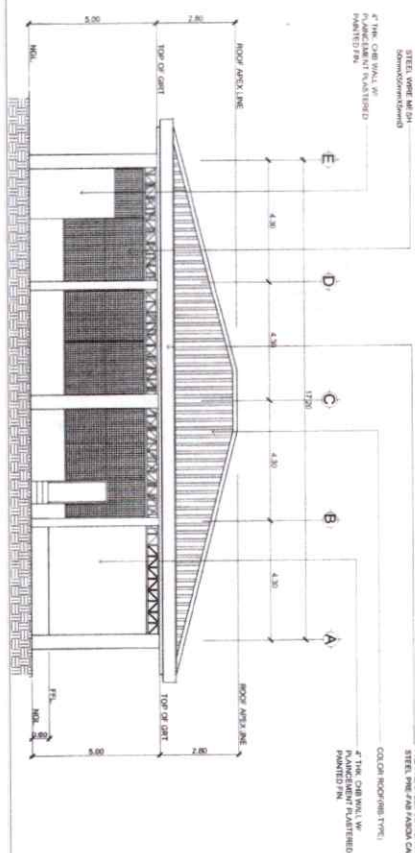
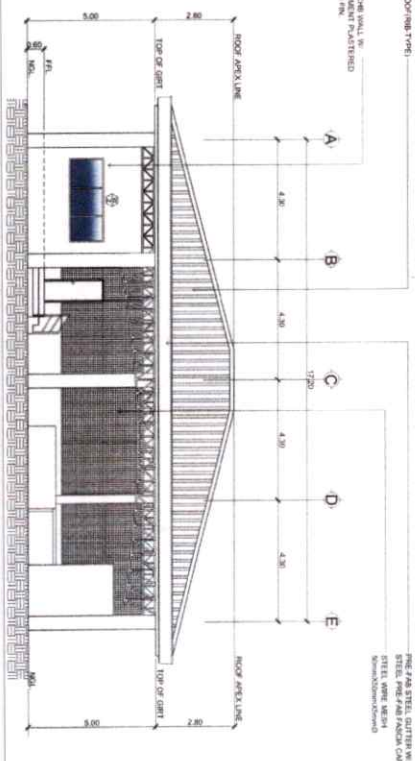
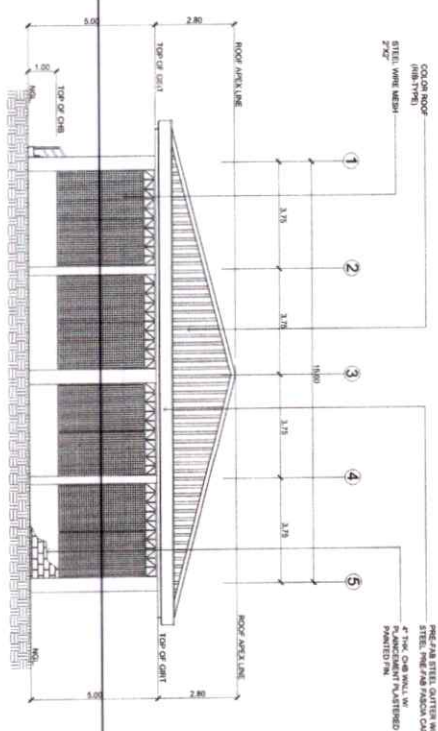
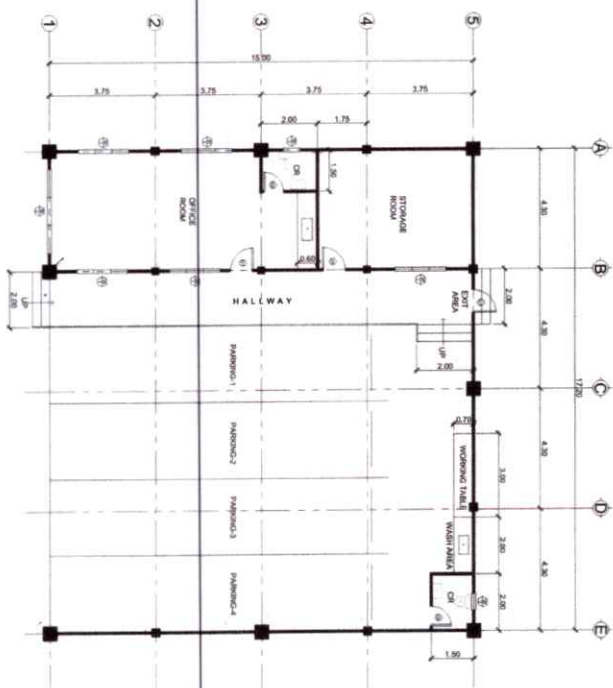
ORIENTATION



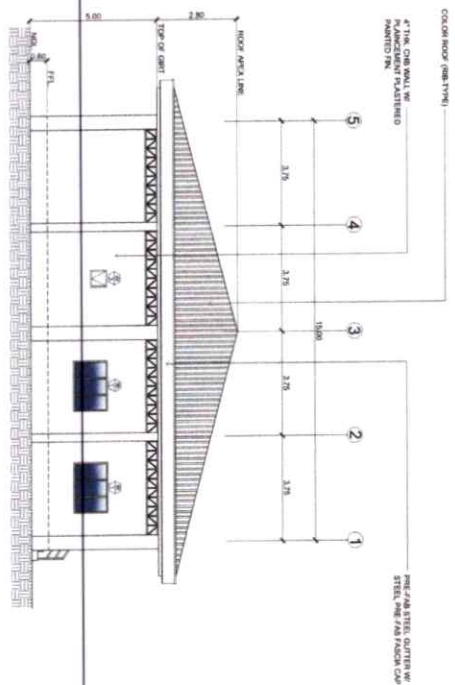
THIS SITE

LOCATION PLAN
SCALE
NTS

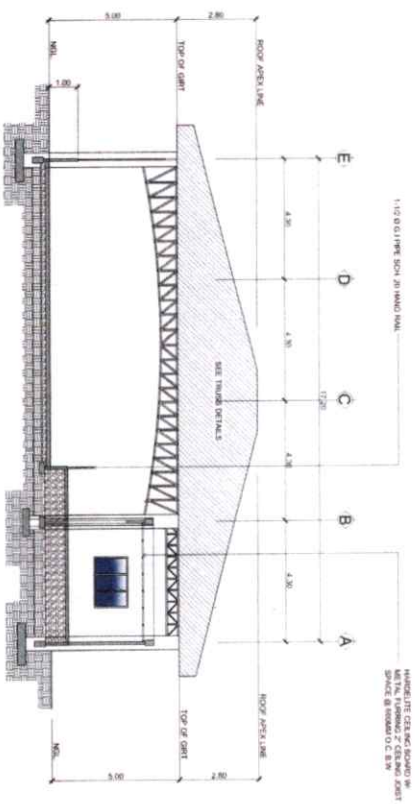
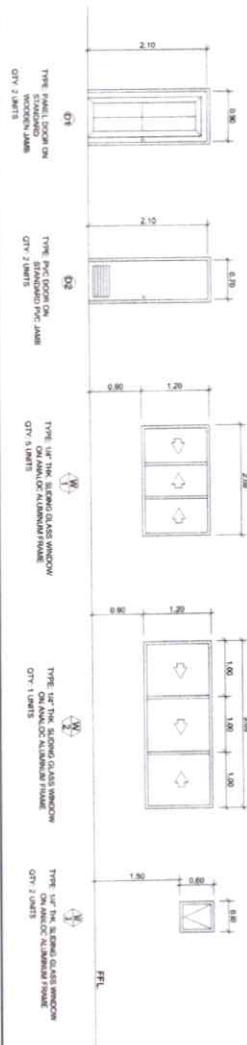
 PHILIPPINE SCIENCE HIGH SCHOOL 1251 TALA, MARICANO CAMPUS Davao City, Davao Region, Philippines	
PREPARED BY:  E.R. Remie C. Zubuyo Civil Engineer	REVIEWED BY:  Olymper L. Toramias Registered Engineer
CHECKED BY:  Jayson C. Villalobos Acad. Staff Engineer	APPROVED BY:  Franklin L. Salido Campus Director
PROJECT: PROPOSED MOTOR POOL AND PARKING AREA	
SHEET CONTENTS: LOCATION PLAN	
SHT. NO. 2/8	



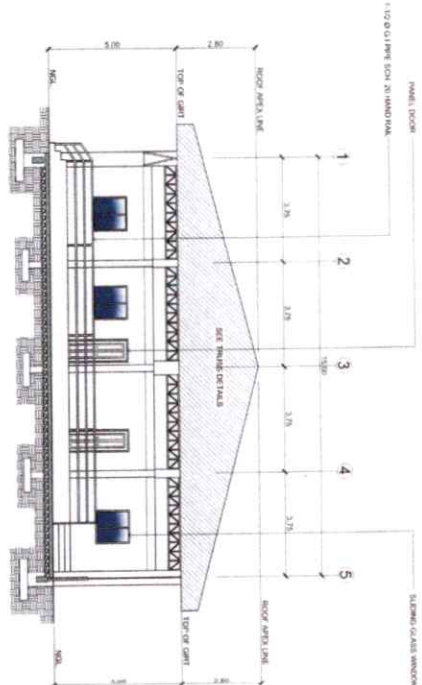
FLOOR & WALL FINISH SCHEDULE	
WALL FINISHES:	
CR	0.60x0.60 6mm CERAMIC TILES GLAZED (1.5m HEIGHT)
BLDG. INTERIOR & EXTENSION	PLAIN GEMENT PLASTER PAINTED P.W.
FLOOR FINISHES:	
OFFICE ROOM	0.60x0.60 6mm large floor tiles(finish)
HALLWAY	ROUGH CONCRETE FINISH
STORAGE ROOM	PLAIN GEMENT FINISH (SMOOTH)
PAVING AREA	ROUGH CONCRETE FINISH
CR	0.60x0.60 6mm CERAMIC TILES UNGLAZED



RIGHT SIDE ELEVATION
SCALE: 1/8" = 1'-0"



SECTION THRU 'A-A'
SCALE: 1/8" = 1'-0"



SECTION THRU 'B-B'
SCALE: 1/8" = 1'-0"

PREPARED BY:

REVIEWED BY:

CHECKED BY:

APPROVED BY:

PROJECT:

SHEET CONTENTS:

SHT. NO.



PHILIPPINE SCIENCE HIGH SCHOOL
Department of Science and Technology
Division Office - Marikina City
Marikina City, Philippines

DESIGNED BY: JUAN M. TORRES
CHECKED BY: JUAN M. TORRES
APPROVED BY: JUAN M. TORRES

DESIGNED BY: JUAN M. TORRES
CHECKED BY: JUAN M. TORRES
APPROVED BY: JUAN M. TORRES

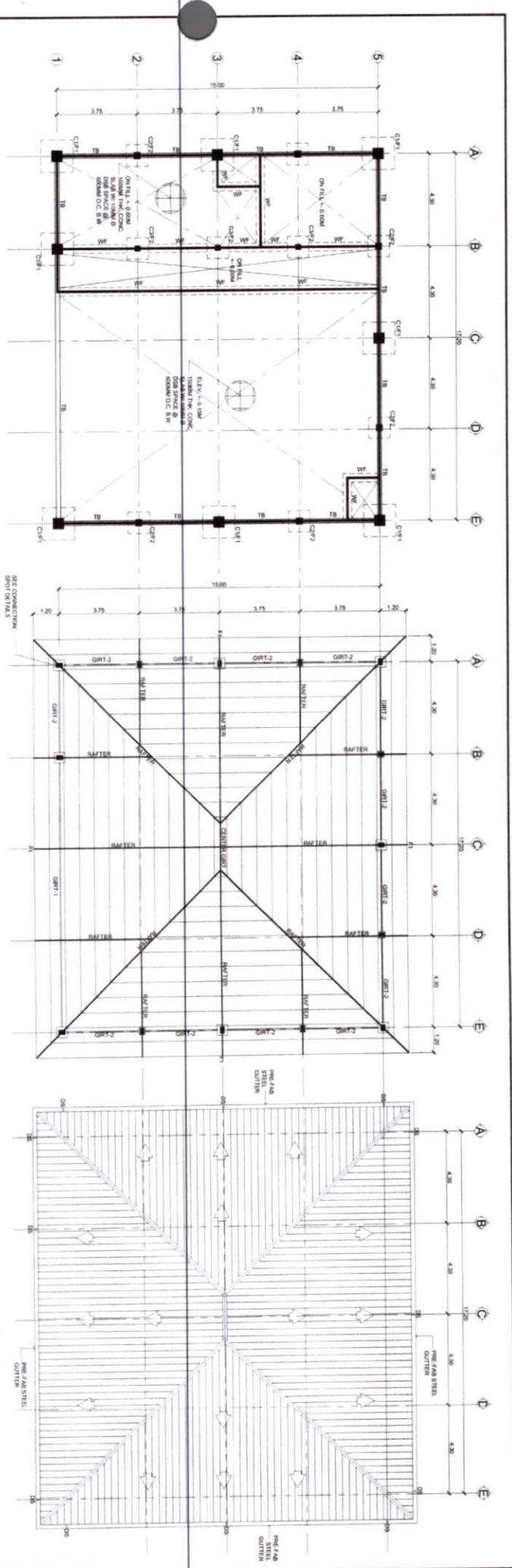
DESIGNED BY: JUAN M. TORRES
CHECKED BY: JUAN M. TORRES
APPROVED BY: JUAN M. TORRES

DESIGNED BY: JUAN M. TORRES
CHECKED BY: JUAN M. TORRES
APPROVED BY: JUAN M. TORRES

DESIGNED BY: JUAN M. TORRES
CHECKED BY: JUAN M. TORRES
APPROVED BY: JUAN M. TORRES

DESIGNED BY: JUAN M. TORRES
CHECKED BY: JUAN M. TORRES
APPROVED BY: JUAN M. TORRES

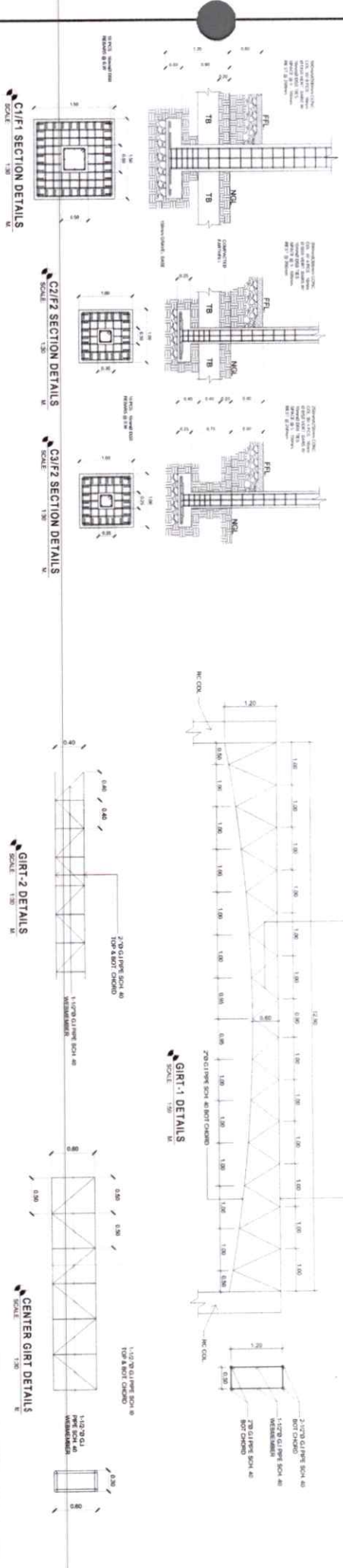
DESIGNED BY: JUAN M. TORRES
CHECKED BY: JUAN M. TORRES
APPROVED BY: JUAN M. TORRES



FOUNDATION PLAN
SCALE: 1/100

ROOF FRAMING PLAN
SCALE: 1/100

ROOF PLAN
SCALE: 1/100



SECTION DETAILS
SCALE: 1/30

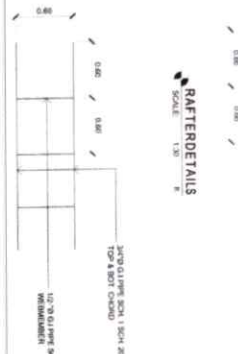
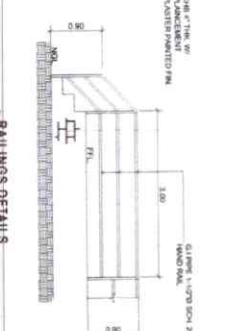
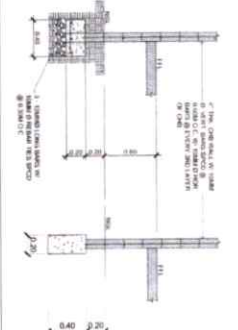
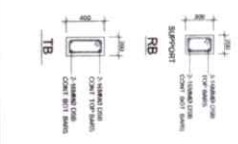
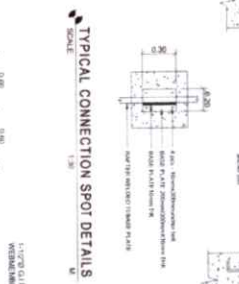
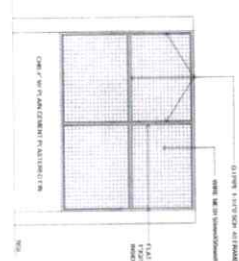
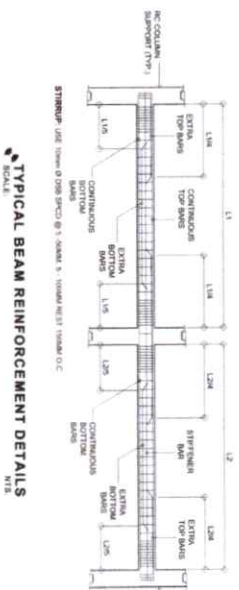
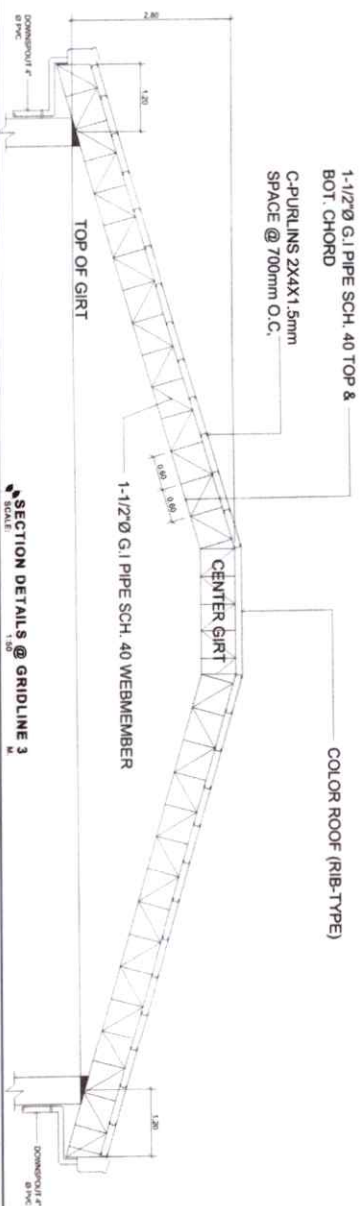
GIRT DETAILS
SCALE: 1/30

CENTER GIRT DETAILS
SCALE: 1/30

 PHILIPPINE SCIENCE HIGH SCHOOL Department of Civil Engineering Office of the Dean 1501 Alabang Road, Alabang, Muntinlupa City, Metro Manila 1550		PREPARED BY:  Engr. Raulito C. Obispo Civil Engineer		REVIEWED BY:  Queen Jely L. Toranzo Resident Engineer		CHECKED BY:  Jason C. Yambunan Assistant Engineer		APPROVED BY:  Franklin L. Saldia Campus Director		PROJECT: PROPOSED MOTOR POOL AND PARKING AREA LOCATION: NANGRA, BALOI, LAMBO DEL NORTE		SHEET CONTENTS: FOUNDATION PLAN ROOF FRAMING PLAN ROOF PLAN GIRT DETAILS CENTER GIRT DETAILS SECTION DETAILS		SHT. NO. <div style="border: 1px solid black; border-radius: 50%; width: 40px; height: 40px; display: flex; align-items: center; justify-content: center;"> <div style="border: 1px solid black; border-radius: 50%; width: 20px; height: 20px; display: flex; align-items: center; justify-content: center;"> 5 </div> 8 </div>	
--	--	--	--	---	--	---	--	--	--	--	--	---	--	--	--

GENERAL NOTES:

1. ALL DIMENSION ARE IN METERS UNLESS OTHERWISE INDICATED.
2. ALL CONCRETE WORKS SHALL BE DONE IN ACCORDANCE WITH THE LATEST AC BUILDING CODE.
3. MINIMUM COMPRESSIVE STRENGTH OF REINFORCED & LEAN CONCRETE AT 28-DAY PERIOD SHALL BE 3000 PSI AND 2000 PSI RESPECTIVELY.
4. ALL REINFORCING STEEL BARS SHALL CONFORM TO THE REQUIREMENTS OF ASTM A601/2002. DEFORMED STEEL BARS, GRADE 40. ALL REINFORCING BARS SHALL BE INSTALLED IN CONFORMANCE OF THE STANDARD PRACTICE FOR DETAILING REINFORCED CONCRETE STRUCTURES, AC 308.
5. THE SOIL SUBGRADE AND FILL SHALL BE SUBSTANTIALLY COMPACTED.
6. MINIMUM CONCRETE COVERING FOR DEFORMED STEEL BARS SHALL BEAM = 25mm
COLUMN = 50mm
FOOTING = 75mm
SLAB ON GRADE = 50mm
7. ALL BOLTS, NUTS AND WASHERS SHALL BE FREE FROM RUST AND IN CONFORMANCE WITH ASTM A307.
8. CONCRETE MASONRY SHALL CONFORM TO ASTM C90 AND IN ACCORDANCE WITH THE STANDARDS AND SPECIFICATIONS OF THE NATIONAL CONCRETE MASONRY ASSOCIATION AND UNIFORM BUILDING CODE.



PHILIPPINE SCIENCE HIGH SCHOOL
Davao Region

PREPARED BY:
JLASH
Civil Engineer

REVIEWED BY:
Olivier M. L. Toranzo
Registered Engineer

CHECKED BY:
Jasmin L. Salido
Acad. Head Engineer

APPROVED BY:
Franklin L. Salido
Campus Director

PROJECT:
PROPOSED MOTOR POOL
AND PARKING AREA

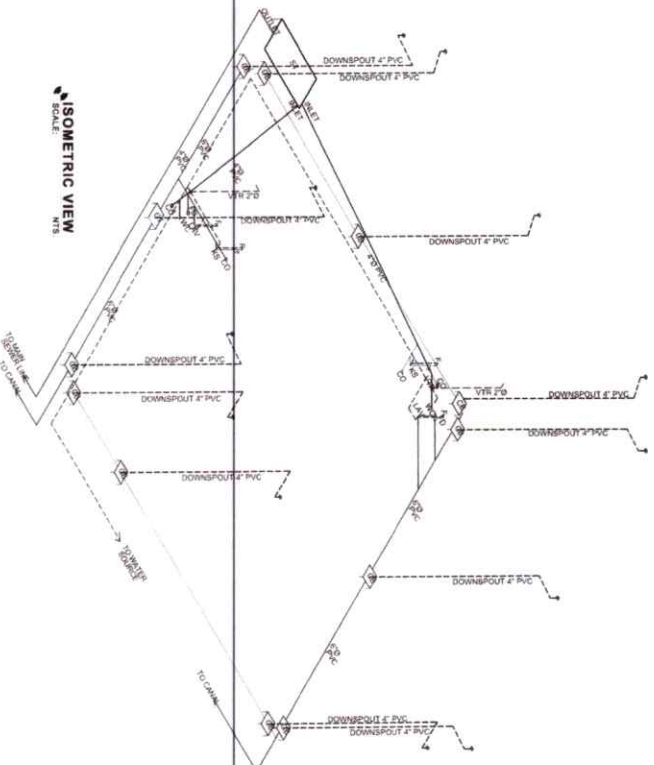
LOCATION: NANGRA, BALO, LAMAD DEL NORTE

SHEET CONTENTS:
6/8

SPECIFICATION:

1. DRAINAGE OF ROOFTOP DRAINAGE SHALL BE MADE BY APPROPRIATE USE OF DOWN-PIPE DRAINAGE (D.P.D.)
2. DRAINAGE OF ROOFTOP DRAINAGE SHALL BE MADE BY APPROPRIATE USE OF DOWN-PIPE DRAINAGE (D.P.D.)
3. DRAINAGE OF ROOFTOP DRAINAGE SHALL BE MADE BY APPROPRIATE USE OF DOWN-PIPE DRAINAGE (D.P.D.)
4. DRAINAGE OF ROOFTOP DRAINAGE SHALL BE MADE BY APPROPRIATE USE OF DOWN-PIPE DRAINAGE (D.P.D.)
5. DRAINAGE OF ROOFTOP DRAINAGE SHALL BE MADE BY APPROPRIATE USE OF DOWN-PIPE DRAINAGE (D.P.D.)
6. DRAINAGE OF ROOFTOP DRAINAGE SHALL BE MADE BY APPROPRIATE USE OF DOWN-PIPE DRAINAGE (D.P.D.)
7. DRAINAGE OF ROOFTOP DRAINAGE SHALL BE MADE BY APPROPRIATE USE OF DOWN-PIPE DRAINAGE (D.P.D.)
8. DRAINAGE OF ROOFTOP DRAINAGE SHALL BE MADE BY APPROPRIATE USE OF DOWN-PIPE DRAINAGE (D.P.D.)

ISOMETRIC VIEW

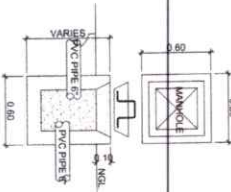


LEGEND:

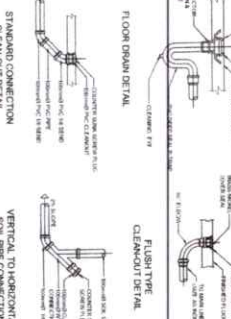
NO.	SYMBOL	DESCRIPTION
1	[Symbol]	MANHOLE
2	[Symbol]	SEWER LINE
3	[Symbol]	WATER LINE
4	[Symbol]	WATER TANK
5	[Symbol]	WATER TANK
6	[Symbol]	WATER TANK
7	[Symbol]	WATER TANK
8	[Symbol]	WATER TANK



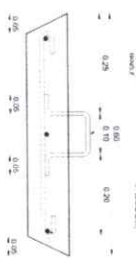
CATCH BASIN DETAILS



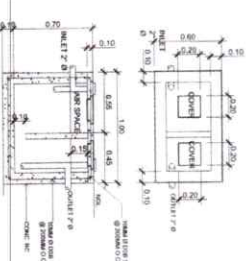
STANDARD SOIL PIPE CONNECTIONS



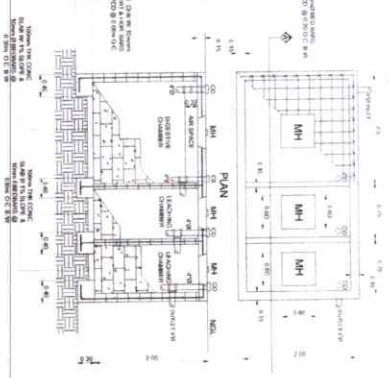
MANHOLE COVER DETAILS



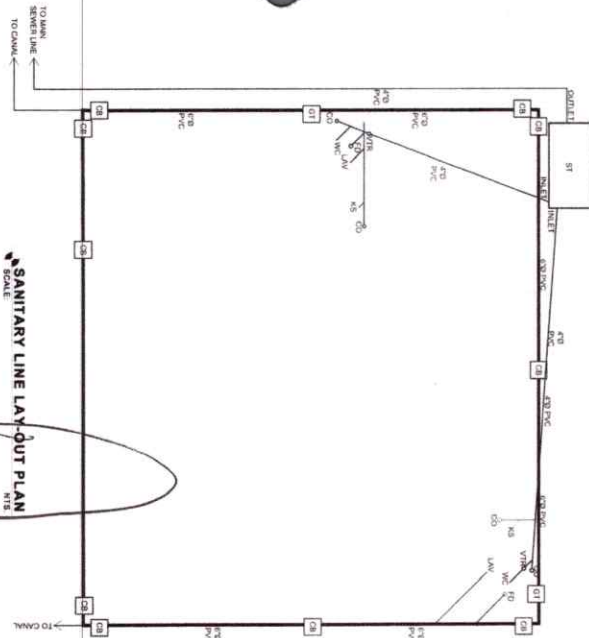
GREASE TRAP DETAILS



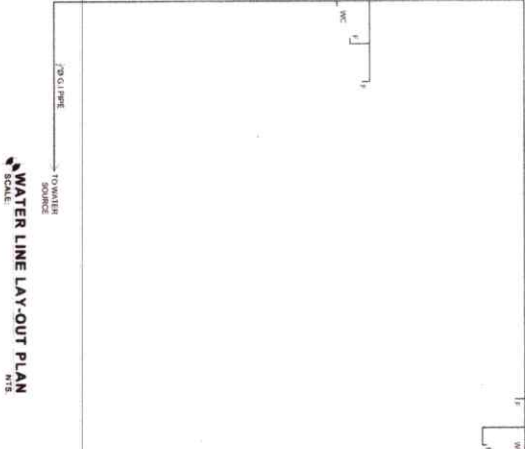
SEPTIC TANK DETAILS



SANITARY LINE LAY-OUT PLAN



WATER LINE LAY-OUT PLAN



PHILIPPINE SCIENCE HIGH SCHOOL

PREPARED BY:

REVIEWED BY:

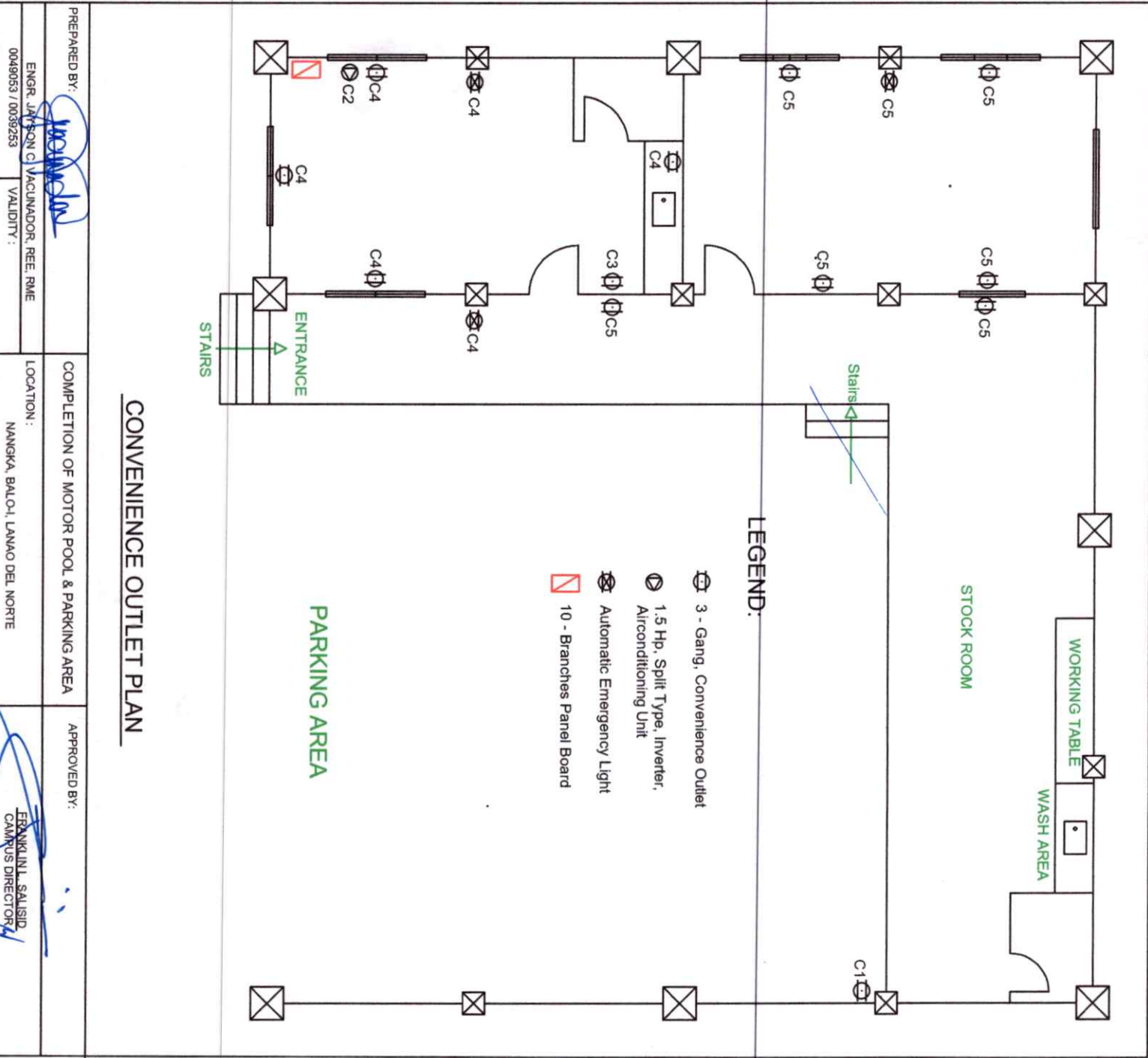
CHECKED BY:

APPROVED BY:

PROJECT:

SHEET NO.



7/8

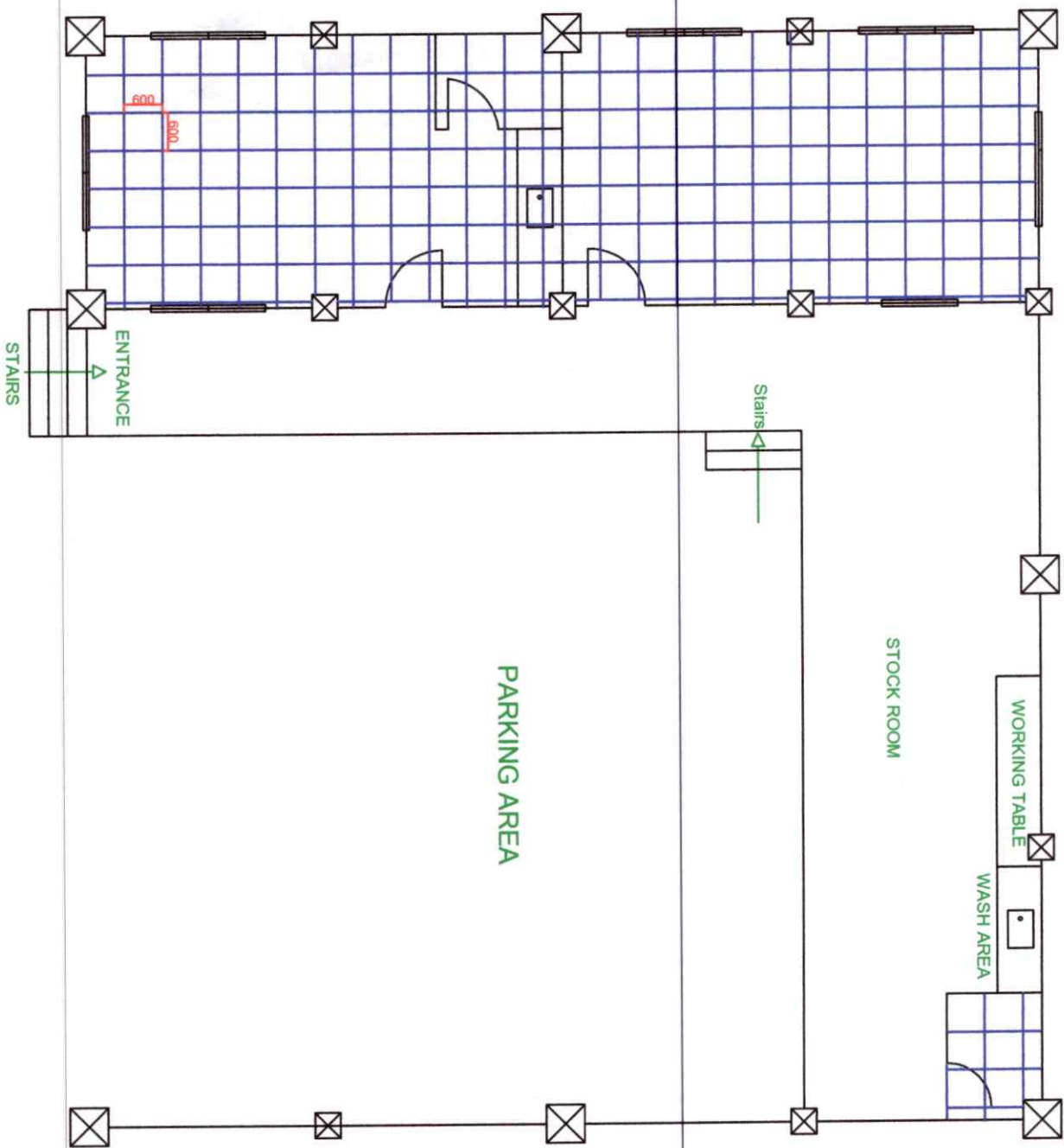


CONVENIENCE OUTLET PLAN

PREPARED BY: ENGR. JAYSON C. MACUNADOR, REE, RME 0049053 / 0039253	COMPLETION OF MOTOR POOL & PARKING AREA	APPROVED BY: FRANKLIN SALSIDO CAMRUS DIRECTOR
--	---	---

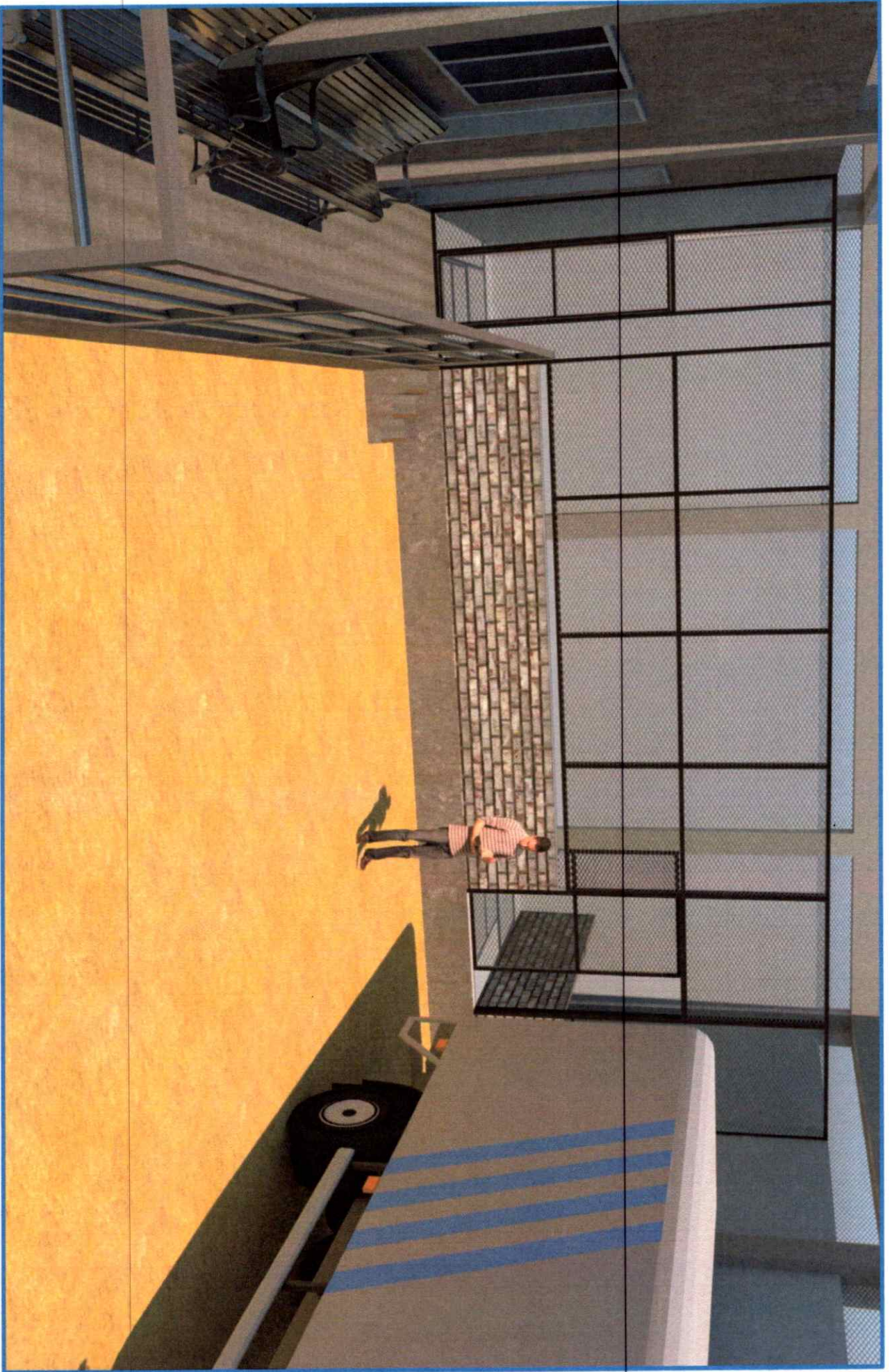
PANEL BOARD							MAIN : 2P , 100 AF , 220 V , 60 HZ		WIRES : 2 x 8.0 mm ² , THHN , 25 mm dia , PVC	
CKT NO	DESCRIPTION	No. of outlet	Volts	Watts	Ampere	Breaker	Size of wire	Conduit PVC		
1	COMPRESSOR / WELDING MACHINE	1 x 3,000	220	3,000	13.63	60 AT	5.5 mm ² THHN	25 mm ²		
2	AIR CONDITION UNIT (1.5 HP)	1 x 1,103	220	1,103	5.0	30 AT	3.5 mm ² THHN	13 mm ²		
3	REFRIGERATOR	1 x 800	220	800	3.6	30 AT	3.5 mm ² THHN	13 mm ²		
4	CONVENIENCE OUTLET	6 x 360	220	2,160	9.8	20 AT	3.5 mm ² THHN	13 mm ²		
5	CONVENIENCE OUTLET	7 x 360	220	2,520	11.45	20 AT	3.5 mm ² THHN	13 mm ²		
6	LIGHTING OUTLET	9 x 100	220	900	4.0	15 AT	2.0 mm ² THHN	13 mm ²		
7	LIGHTING OUTLET	11 x 100	220	1,100	5.0	20 AT	2.0 mm ² THHN	13 mm ²		
8	FLOOD LIGHT	4 x 100	220	400	1.8	15 AT	2.0 mm ² THHN	13 mm ²		
9	FLOOD LIGHT & LIGHTING OUTLET	5 x 100	220	500	2.3	15 AT	2.0 mm ² THHN	13 mm ²		
TOTAL CONNECTED LOAD				12,483 Watts						
DEMAND AMPERE					56.74 Ampere					

PREPARED BY:  ENGR. JAYSON G. MACDONADOR, REE, RME		COMPLETION OF MOTOR POOL & PARKING AREA		APPROVED BY:  FRANKLIN L. SALISID CAMPUS DIRECTOR	
PRC : 0049053 / 0039253		VALIDITY :		LOCATION : NANGKA, BALOI, LANA DEL NORTE	



CEILING PLAN

PREPARED BY: ENGR. JAYSON C. VACANADOR, REE, RME 0049053 / 0039253	COMPLETION OF MOTOR POOL & PARKING AREA	APPROVED BY: FRANKLIN L. SALSID CAMPUS DIRECTOR
VALIDITY:	LOCATION: NANGKA, BALOI, LANAO DEL NORTE	



Architectural rendering