
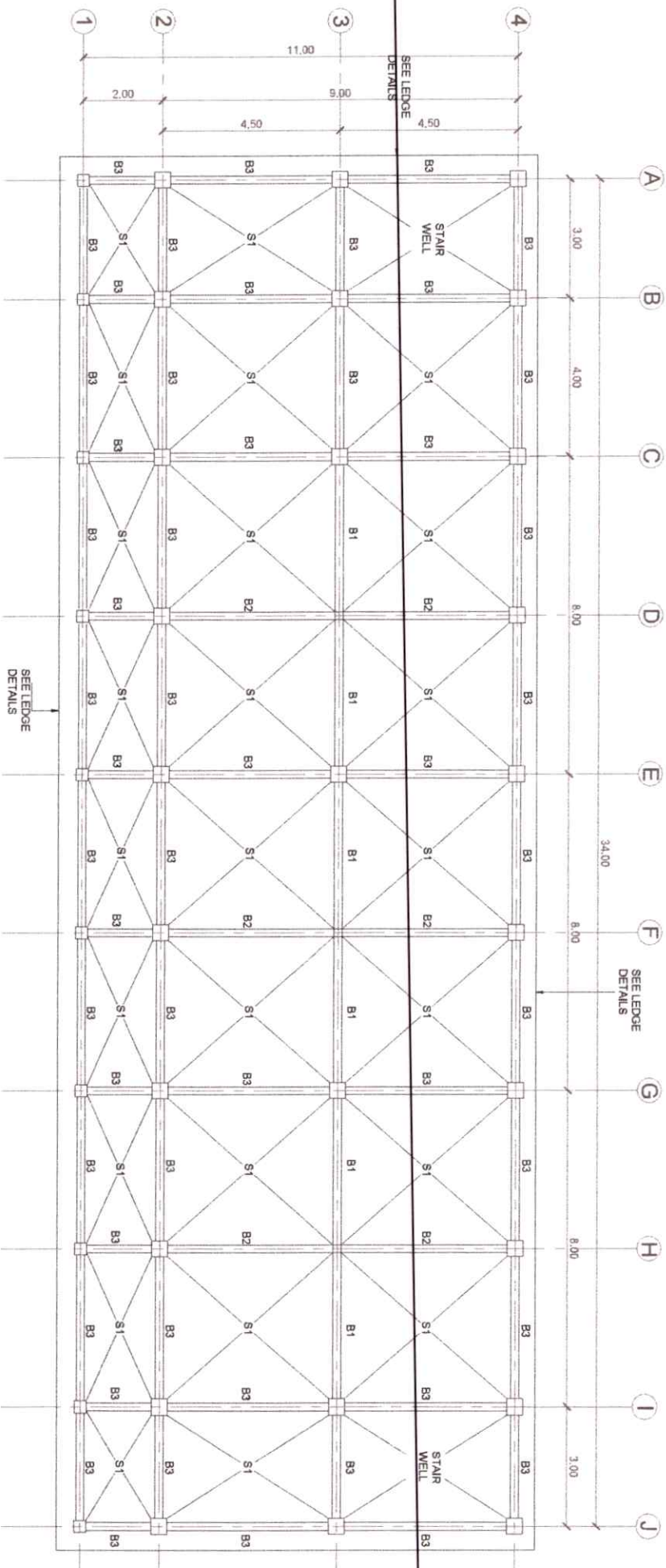


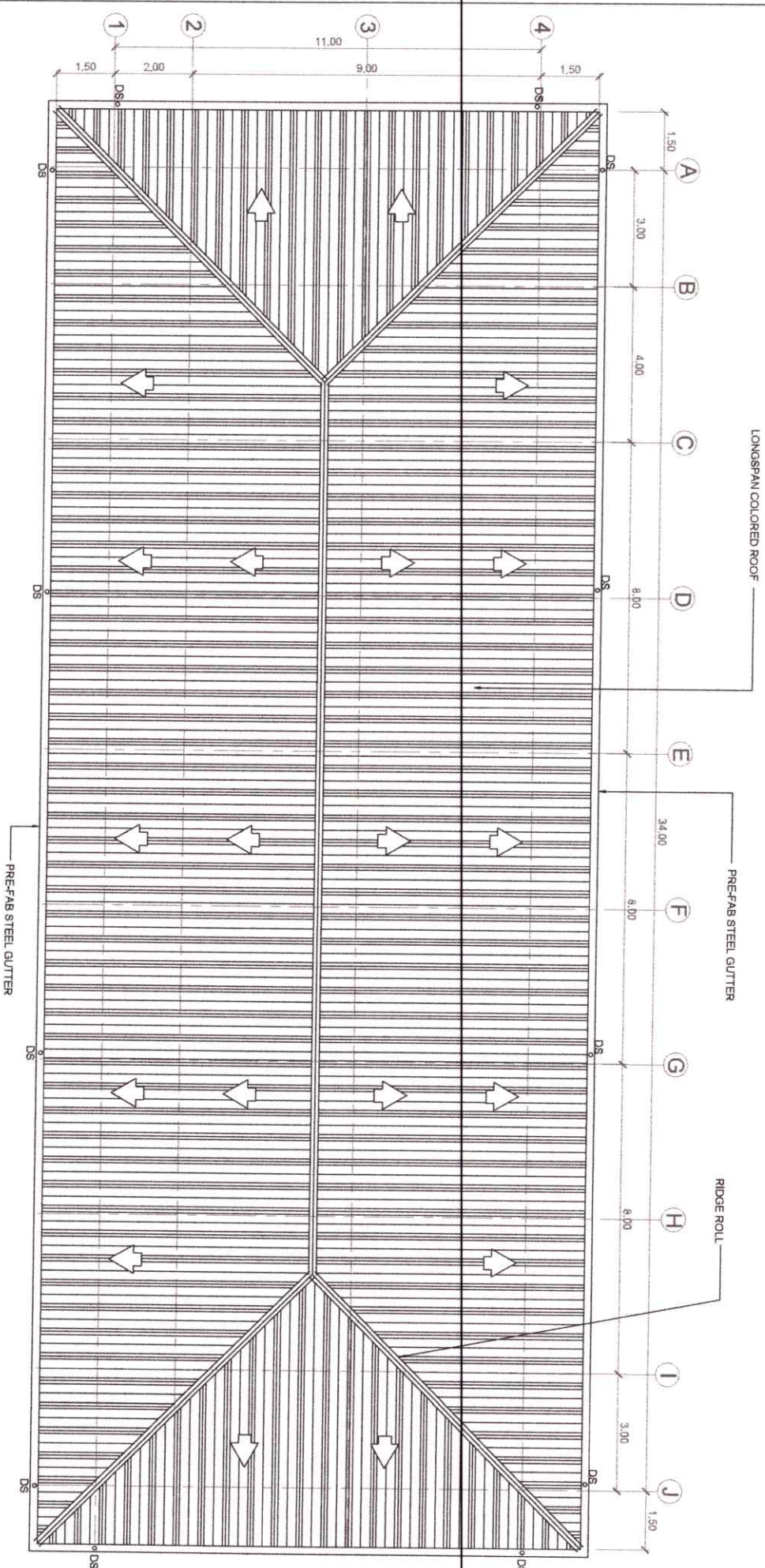
FOUNDATION PLAN
SCALE: 1:100
M.

 PHILIPPINE SCIENCE HIGH SCHOOL Department of Civil Engineering		PREPARED BY: Raimie C. Cabuyo Civil Engineer		REVIEWED & CHECKED BY: Jayson C. Vacunador Adding Head Engineer		APPROVED BY: Franklin L. Salsid Campus Director		PROJECT: PROPOSED TWO-STOREY SCHOOL BUILDING		SHEET CONTENTS: FOUNDATION PLAN		SHT. NO. 12 / 40	
REQ. NO. 011178 DES. NO. 011178 DATE: 01-14-2024 TIN. NO. 044-13409								LOCATION: NANGRA, BALICH LAYAO DEL NORTE					




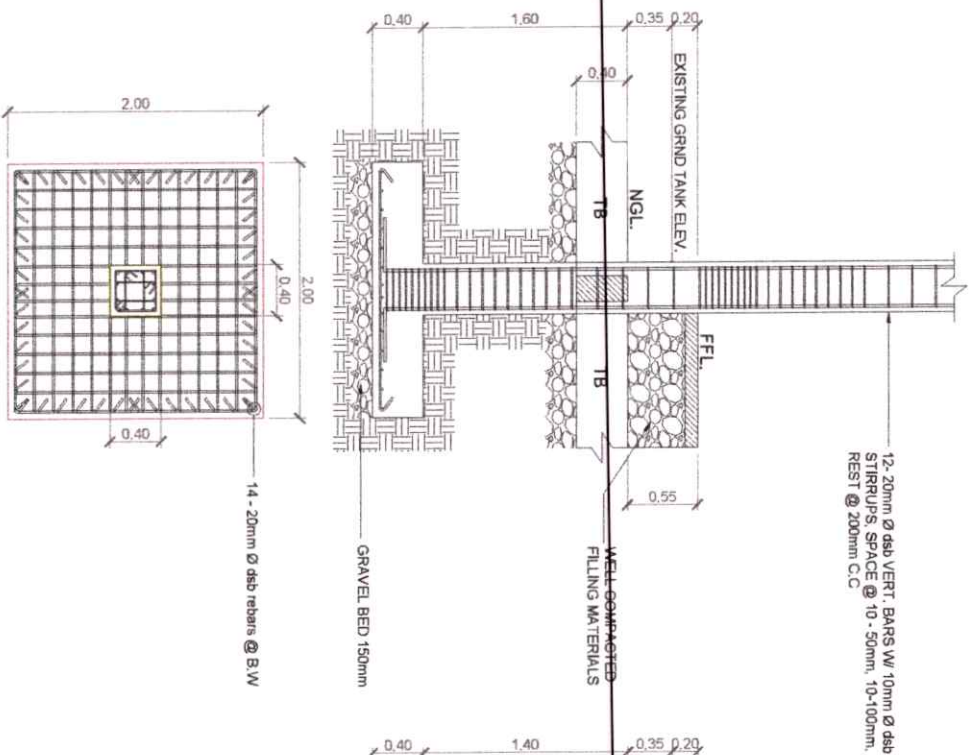
SECOND FLOOR FRAMING PLAN
SCALE 1:100

 PHILIPPINE SCHOOL OF ARCHITECTURE 1000 P. O. BOX 1000, MANILA Tel. No. 335-1000	PREPARED BY : Rannie C. Cabuyao Civil Engineer		REVISIONS DATE: 10-12-11 NO. OF: 100-1000	REVIEWED & CHECKED BY : Jayson C. Vacunador Adding Head Engineer		APPROVED BY : Franklin L. Salido Campus Director		PROJECT: PROPOSED TWO-STOREY SCHOOL BUILDING	SHEET CONTENTS : SECOND FLOOR FRAMING PLAN	SHT. NO. 13 / 40
--	--	--	---	--	--	--	--	--	--	-------------------------

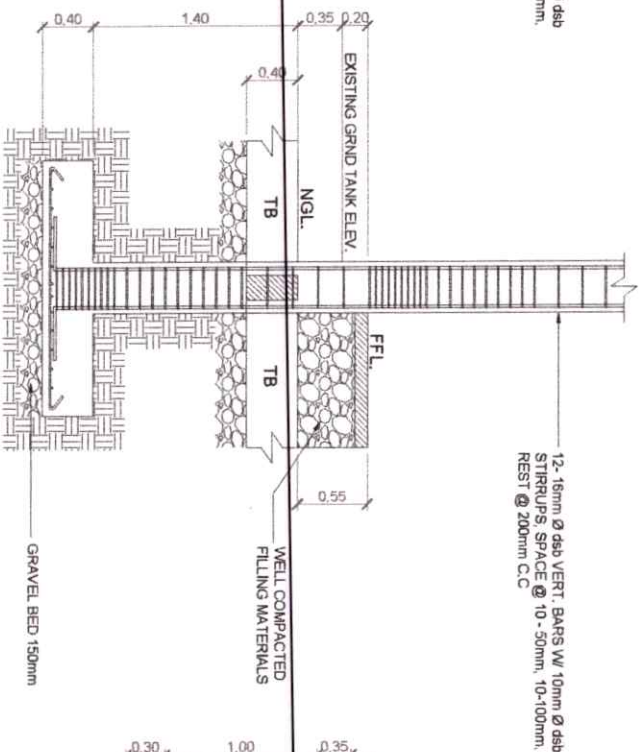


ROOF PLAN
SCALE: 1:100 M.L.

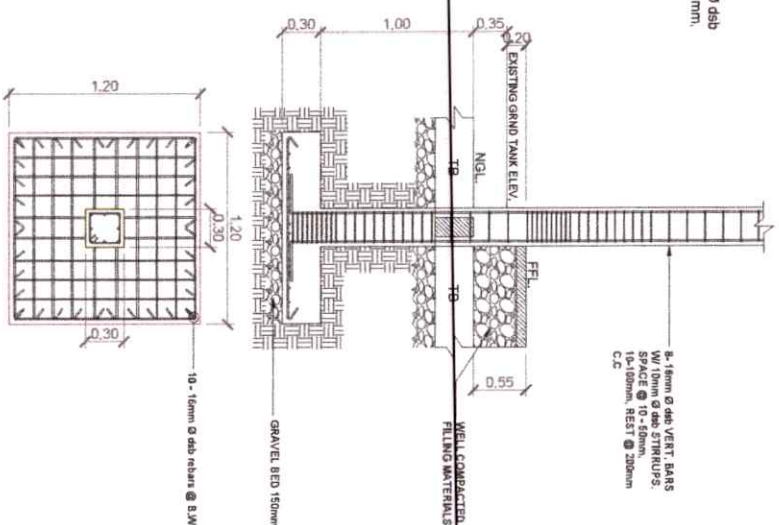
 PHILIPPINE SCIENCE HIGH SCHOOL Department of Education Division Office - Marikina City		PREPARED BY: Raimie C. Cabuyao Civil Engineer		REVIEWED & CHECKED BY: Jayson C. Vacunador Acting Head Engineer		APPROVED BY: Franklin L. Salido Campus Director		PROJECT: PROPOSED TWO-STORY SCHOOL BUILDING		SHEET CONTENTS: ROOF PLAN		SHT. NO. 16 / 40	
REG. NO. 911976		REV. NO. 001/00		DATE: 10-01-2023		THE NO. 148-75423		LOCATION: NANOKA, BALICH UYAO DEL NORTE					



F1C1 SECTION DETAILS
SCALE 1:35 M.



F2C2 SECTION DETAILS
SCALE 1:35 M.



F3C3 SECTION DETAILS
SCALE 1:35 M.



PHILIPPINE SCIENCE HIGH SCHOOL
BAGUIO CAMPUS
BAGUIO CITY, PANGASINAN

PREPARED BY:

Ramiro C. Cabuyao
Civil Engineer

REVIEWED & CHECKED BY:

Jayson C. Vacunador
Acting Head Engineer

APPROVED BY:

Franklin L. Salido
Campus Director

PROJECT:

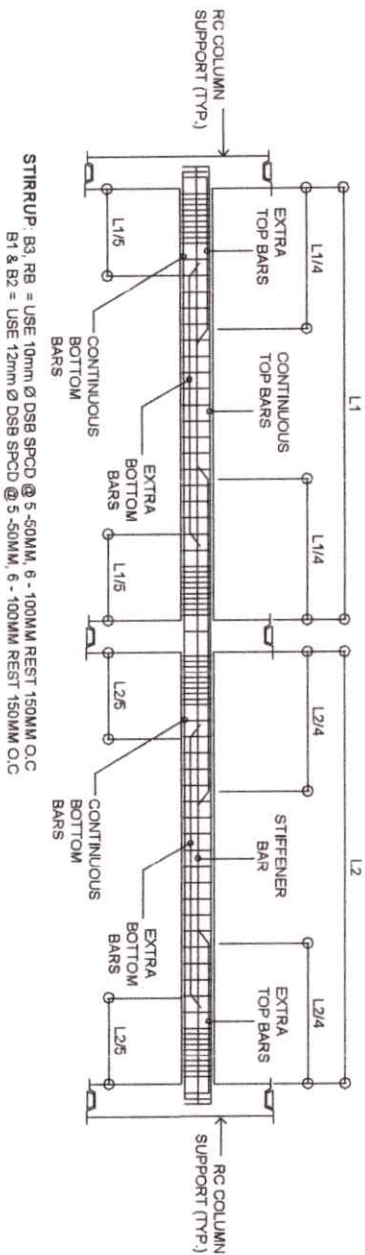
PROPOSED TWO-STOREY
SCHOOL BUILDING

SHEET CONTENTS:

F1C1 DETAILS
F2C2 DETAILS

SHT. NO.

17/40

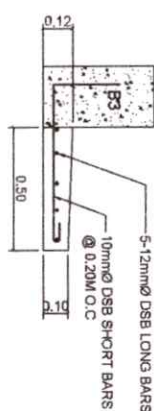


STRUP: B3, RB = USE 10mm Ø DSB SPCD @ 5 - 50MM, 6 - 100MM REST 150MM O.C
B1 & B2 = USE 12mm Ø DSB SPCD @ 5 - 50MM, 6 - 100MM REST 150MM O.C

TYPICAL BEAM REINFORCEMENT DETAILS

SCALE

NIS

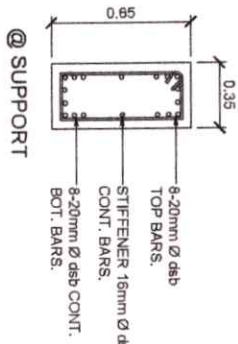


LEDGE SECTION DETAILS

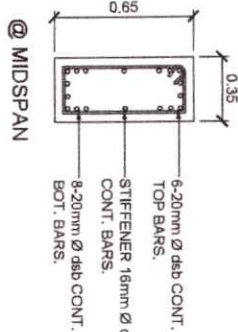
SCALE

1:25

M



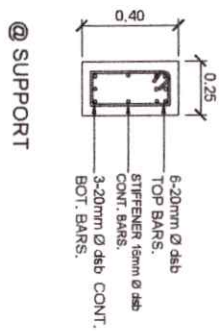
@ SUPPORT



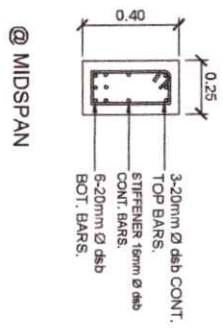
@ MIDSPAN

USE: 12mm DSB TIES SPACE @ 5 - 50MM, 6 - 100MM REST @ 150MM O.C

B1



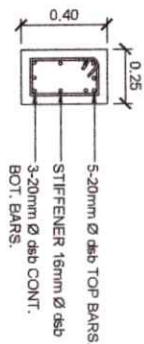
@ SUPPORT



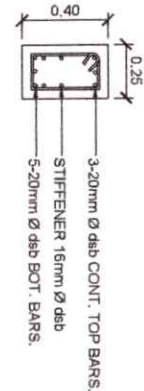
@ MIDSPAN

USE: 12mm DSB TIES SPACE @ 5 - 50MM, 6 - 100MM REST @ 150MM O.C ,

B2



@ SUPPORT



@ MIDSPAN

USE: 10mm DSB TIES SPACE @ 5 - 50MM, 6 - 100MM REST @ 150MM O.C , C.C

B3

BEAM SECTION DETAILS


SCALE

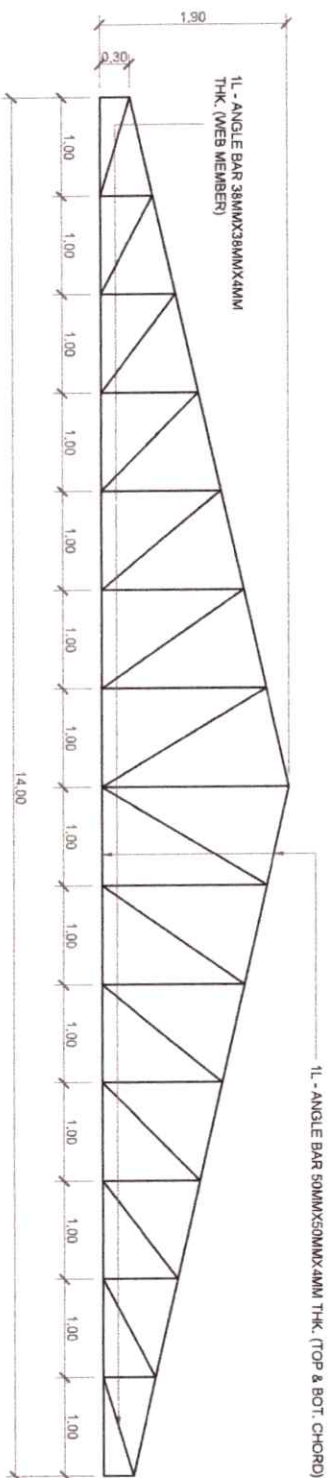
1:25

M

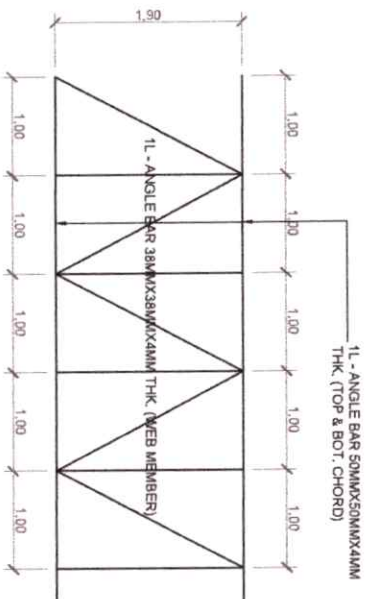
RB

TB

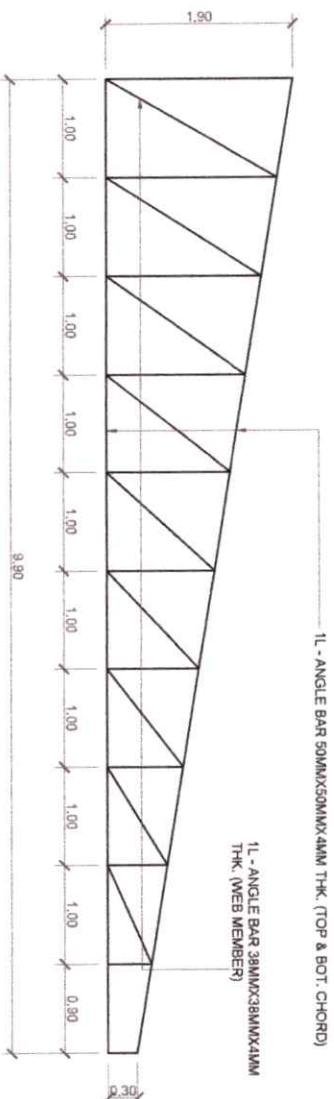
 <p>PHILIPPINE SCIENCE HIGH SCHOOL Department of Civil Engineering Office of the Dean</p>	<p>PREPARED BY:</p> <p>Rennie C. Ochoyao CAD Engineer</p>	<p>REVIEWED & CHECKED BY:</p> <p>Jayson C. Vacunador Acting Head Engineer</p>	<p>APPROVED BY:</p> <p>Franklin L. Salcedo Campus Director</p>	<p>PROJECT:</p> <p>PROPOSED TWO-STOREY SCHOOL BUILDING</p>	<p>SHEET CONTENTS:</p> <p>TYPICAL BEAM REINFORCEMENT DETAILS BEAM SECTION DETAILS</p>	<p>SHT. NO.</p> <p>18 / 40</p>
--	---	---	--	--	---	--------------------------------



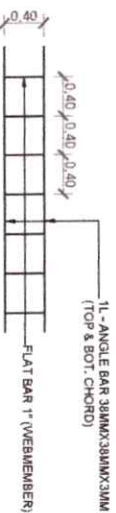
TYPICAL TRUSS DETAILS
SCALE 1:50




CENTER GIRT DETAILS
SCALE 1:50



TYPICAL HALF-TRUSS DETAILS
SCALE 1:50



FASCIA FRAME DETAILS
SCALE 1:50

 PHILIPPINE SCIENCE HIGH SCHOOL <small>Department of Education - Division Office - Marikina City</small>		PREPARED BY : Ranie C. Caluyao <small>Civil Engineer</small>		REVIEWED & CHECKED BY : Jayson C. Vacunador <small>Acting Head Engineer</small>		APPROVED BY : Franklin L. Salido <small>Campus Director</small>		PROJECT : PROPOSED TWO-STORY SCHOOL BUILDING LOCATION: NANGA, BALCH LUNAO DEL NORTE		SHEET CONTENTS : TRUSS DETAILS HALF-TRUSS DETAILS FASCIA FRAME DETAILS CENTER GIRT DETAILS		SHEET NO. : 19/40	
DES. NO. : 21278 DATE : 10-05-21 REV. NO. : 01		DATE : 10-05-21 REV. NO. : 01											

